



68 Chiltern Road, Goole, DN14 6HW

£140,000

EPC:

****NO UPWARD CHAIN**** This mature three bedroom semi detached house is located in a well established residential area and would make a fantastic starter home or investment opportunity. A viewing is highly recommended to appreciate the potential on offer.

- Mature semi detached house
- Three bedrooms
- Ideal starter home
- Great investment opportunity
- Spacious entrance hall
- Lounge
- Fitted kitchen
- Ground floor WC
- Gardens to the front and rear
- NO UPWARD CHAIN

DESCRIPTION

This mature three bedroom semi detached house incorporates gas central heating and uPVC double glazing and offers accommodation comprising;

ENTRANCE HALL

5'11" x 14'2"

uPVC entrance door. Stair way leading to the first floor. One central heating radiator.

LOUNGE

14'0" x 13'7"

A grey fire surround with a stone hearth housing an electric fire. Recessed storage cupboard and drawers. One central heating radiator.

KITCHEN

17'2" x 7'4" max.

A range of fitted base and wall units having laminated worktops and tiled work surrounds. The units incorporate a stainless steel single drainer sink. Plumbing for an automatic washing machine. Storage cupboard. One central heating radiator.

LOBBY

3'2" x 2'9"

uPVC side entrance door. Under stairs storage cupboard.

W.C.

4'5" x 3'2"

White low flush WC.

LANDING

5'8" x 8'5"

Loft access.

BEDROOM ONE

13'3" x 11'3"

To the front elevation. Recess storage space. Cast iron fire grate. One central heating radiator.

BEDROOM TWO

8'3" x 12'2"

To the rear elevation. Cupboard housing the gas central heating boiler. One central heating radiator.

BEDROOM THREE

8'5" x 10'3"

The front elevation. Over stairs storage cupboard. One central heating radiator.

BATHROOM

5'2" x 5'8"

A modern white suite comprising a bath and a wash hand basin. Chrome heated towel rail. Recessed storage space.

STORE

6'3" x 7'1"

Brick built garden store.

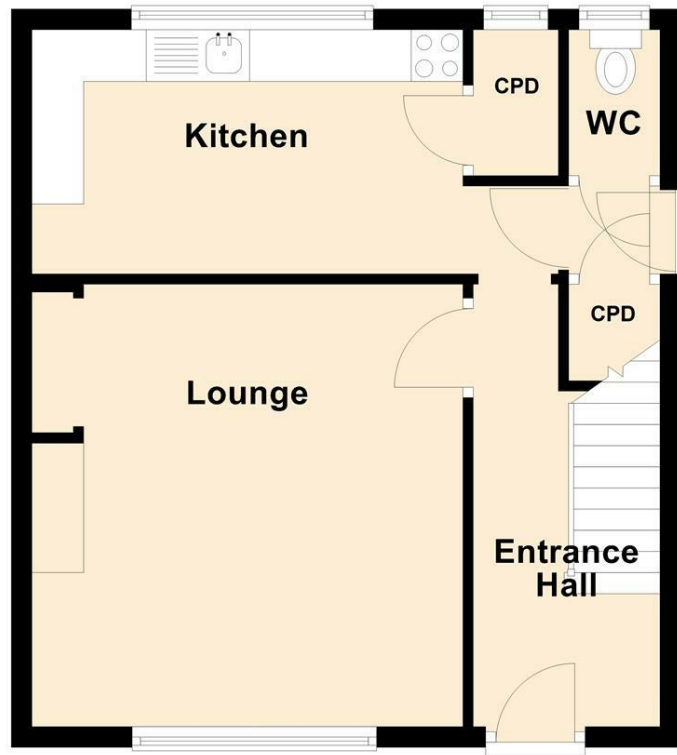
GARDENS

To the front of the property there is a gravelled garden enclosed by a brick garden wall and metal gate. A concrete pathway leads to the front entrance door and extends along the side of the property to the rear garden through a timber gate.

To the rear of the property the garden is fully enclosed and mainly laid to lawn with a paved pathway and a timber garden shed.

Ground Floor

Approx. 41.0 sq. metres (440.8 sq. feet)



otal area: approx. 81.9 sq. metres (881.6 sq. feet)

First Floor

Approx. 41.0 sq. metres (440.8 sq. feet)

